



MAHENDRA BRASS PRODUCTS

®



#### MAHENDRA BRASS PRODUCTS

Our firm Named Mahendra Brass Products has began its journey in 1992 from manufacturing cable glands and over a period of time it has established its name in the field of manufacturing as well as supplying and exporting Cable Glands, Electrical Accessories and Conduit Accessories. Our firm is well known for its quality along with its competitive prices in the market. Here; with modern production facilities we have been able to design the products in standard as well as custom-fit form.

To provide best quality and service with competitive price will be our first priority. If you have any query or require more information feel free to contact us at any time, we would get back to you immediately on the matter. For more information regarding the products you can visit our website which is given below.

Our Mission is to become one of the most trusted partners of our customers in the region by providing superior quality products and incomparable services.

Our vision is to be recognized as the market leader in the globe by acquiring operational excellence in Manufacturing and exceeding customers' expectation.



**BRASS BW 2 PART**



Cable Gland Size	U.A.D.	Max O.D.	Armour Wire Diameter	Cable Gland Dimension				Part No.
				Size	Thread Length	Gland Dia. Across Flat	Gland Dia. Across Corner	
20S	11.80	16.10	0.90/1.25	20.00	9.50	21.00	23.80	MBP-BW 20S
20L	14.10	18.40	0.90/1.25	20.00	9.50	22.50	25.50	MBP-BW 20
25L	20.20	25.20	1.25/1.60	25.00	9.50	31.50	35.00	MBP-BW 25
32L	26.40	32.40	1.60/2.00	32.00	10.00	40.40	44.80	MBP-BW 32
40L	32.30	38.60	1.60/2.00	40.00	15.00	46.50	51.00	MBP-BW 40
50S	38.20	46.20	2.00/2.50	50.00	15.00	54.00	60.00	MBP-BW 50S
50L	44.00	52.00	2.00/2.50	50.00	15.00	60.50	66.00	MBP-BW 50
63S	50.40	58.10	2.50	63.00	15.00	66.00	73.00	MBP-BW 63S
63L	56.30	64.60	2.50	63.00	15.00	72.50	81.50	MBP-BW 63
75S	61.00	70.90	2.50	75.00	15.00	80.00	90.50	MBP-BW 75S
75L	68.30	78.20	2.50/3.15	75.00	15.00	85.00	93.00	MBP-BW 75
90L	80.50	92.70	3.15	90.00	15.00	102.50	112.00	MBP-BW 90



**BRASS BW 4 PART**

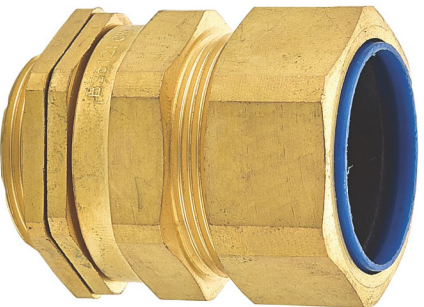


CABLE DIMENSIONS				Cable Gland Dimension			
Cable Gland Size	U.A.D.	Max O.D.	Size	Thread Length	Gland Dia. Across Flat	Gland Dia. Across Corner	Part No.
20S	12.00	17.00	20.00	10.00	21.50	23.65	MBP-BW-20S
20L	14.00	20.00	20.00	9.00	24.00	27.00	MBP-BW-20L
25S	19.50	25.00	25.00	9.00	30.40	33.80	MBP-BW-25S
25L	20.50	26.50	25.00	9.00	32.00	36.00	MBP-BW-25L
32S	23.50	30.00	32.00	9.00	34.50	38.50	MBP-BW-32S
32L	27.00	33.30	32.00	9.00	38.50	42.80	MBP-BW-32L
40S	30.30	38.00	40.00	10.00	44.50	50.00	MBP-BW-40S
40L	33.00	41.00	40.00	10.00	47.25	53.00	MBP-BW-40L
50S	40.00	48.00	50.00	10.00	56.00	62.00	MBP-BW-50S
50L	44.00	53.40	50.00	10.50	60.40	67.00	MBP-BW-50L
63S	51.00	60.00	63.00	14.00	69.00	76.00	MBP-BW-63S
63L	56.00	66.40	63.00	13.50	75.00	83.00	MBP-BW-63L
75S	61.70	72.40	75.00	13.50	83.00	82.00	MBP-BW-75S
75L	68.00	78.00	75.00	15.00	87.70	98.00	MBP-BW-75L
90L	79.00	90.00	90.00	19.00	105.00	118.00	MBP-BW-90L





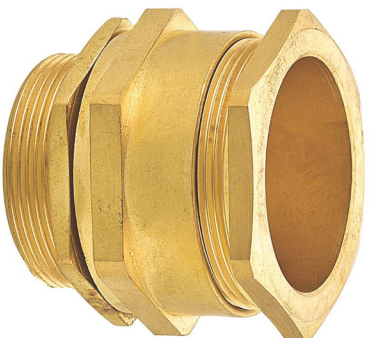
**BRASS CW 4 PART**



CABLE DIMENSIONS				Cable Gland Dimension			
Cable Gland Size	U.A.D.	Max O.D.	Size	Thread Length	Gland Dia. Across Flat	Gland Dia. Across Corner	Part No.
20S	12.00	19.00	20.00	9.50	23.00	25.00	MBP-CW 20S
20L	15.00	23.50	20.00	9.50	27.00	31.80	MBP-CW 20L
25S	17.20	25.20	25.00	10.00	30.00	34.00	MBP-CW 25S
25L	20.70	30.00	25.00	10.00	34.50	38.00	MBP-CW 25L
32L	27.00	36.00	32.00	10.00	40.50	44.00	MBP-CW 32L
40S	31.00	41.00	40.00	15.00	46.00	51.00	MBP-CW 40S
40L	33.00	44.50	40.00	15.00	48.50	48.50	MBP-CW 40L
50S	40.00	52.00	50.00	15.00	58.00	58.00	MBP-CW 50S
50L	44.70	57.20	50.00	15.00	62.50	62.50	MBP-CW 50L
63S	52.00	64.50	63.00	15.00	72.50	72.50	MBP-CW 63S
63L	57.00	67.00	63.00	15.00	77.00	77.00	MBP-CW 63L
75S	62.30	77.60	75.00	15.00	86.50	86.50	MBP-CW 75S
75L	69.00	79.00	75.00	15.00	92.00	92.00	MBP-CW 75L
90L	79.00	90.00	90.00	25.00	109.00	124.70	MBP-CW 90L



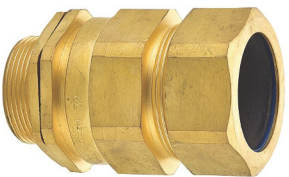
**BRASS A1 / A2**



Cable Gland Size	CABLE DIMENSIONS			Cable Gland Dimension				Part No.
	U.A.D.	Max	O.D.	Size	Thread Length	Gland Dia. Across Flat	Gland Dia. Across Corner	
16L	9.5	13	16	16	15	20	22.3	MBP-A1/A2 16
20S	11.80	15.50	20.00	20.00	15	23.00	25.00	MBP-A1/A2 20S
20L	14.20	18.30	20.00	20.00	15	25.00	27.00	MBP-A1/A2 20L
25S	18.00	22.00	25.00	25.00	15	30.00	32.00	MBP-A1/A2 25S
25L	20.20	28.00	25.00	25.00	15	35.00	39.00	MBP-A1/A2 25L
32S	26.30	31.50	32.00	32.00	15	41.00	45.00	MBP-A1/A2 32S
32L	26.30	31.50	32.00	32.00	15	41.00	45.00	MBP-A1/A2 32L
40S	33.00	38.60	40.00	40.00	15	48.50	54.30	MBP-A1/A2 40S
40L	33.00	38.60	40.00	40.00	15	48.50	54.30	MBP-A1/A2 40L
50S	39.00	44.00	50.00	50.00	16.5	54.00	60.00	MBP-A1/A2 50S
50L	45.00	48.60	50.00	50.00	16.5	60.00	67.00	MBP-A1/A2 50L
63S	50.50	56.50	63.00	63.00	15	70.00	77.50	MBP-A1/A2 63S
63L	56.00	60.00	63.00	63.00	15	74.00	83.00	MBP-A1/A2 63L
75S	62.20	65.80	75.00	75.00	15	80.00	89.60	MBP-A1/A2 75S
75L	68.50	73.30	75.00	75.00	15	84.00	94.00	MBP-A1/A2 75L
90L	80.00	80.00	90.00	90.00	15	98.00	109.50	MBP-A1/A2 90L



**BRASS ETW | PG TYPE**



CABLE DIMENSIONS				Cable Gland Dimension				Part No.
Cable Gland Size	U.A.D.	Max	O.D.	Size	Thread Length	Gland Dia. Across Flat	Gland Dia. Across Corner	
20S	12.00	17.00	20.00	15.00	24.00	27.70	27.70	MBP-ETW 20S
20L	14.20	20.50	20.00	15.00	27.00	31.20	31.20	MBP-ETW 20L
25S	19.00	24.00	25.00	15.00	32.00	35.50	35.50	MBP-ETW 25S
25L	20.40	27.50	25.00	15.00	36.00	40.00	40.00	MBP-ETW 25L
32L	27.00	32.50	32.00	15.00	43.00	47.50	47.50	MBP-ETW 32L
40L	33.00	41.50	40.00	15.00	52.00	58.00	58.00	MBP-ETW 40L
50L	44.50	52.50	50.00	15.00	64.50	72.50	72.50	MBP-ETW 50L
63L	56.50	66.50	63.00	15.00	77.50	86.00	86.00	MBP-ETW 63L



<b>Size</b>	Pg 7 to Pg 48
<b>Standard</b>	EN 50262 : 1999
<b>Application:</b>	Outdoor or Indoor for use with all type of Un-armoured cable glands
<b>Function:</b>	Provide Seal on Outer Sheath of the Un-armoured cable
<b>Ingress Protection</b>	IP65
<b>Material:</b>	Brass BS 2874 C7121 Pb3
<b>Optional Threads</b>	METRIC, NPT, BSP, Pg or as specified
<b>Finish</b>	Brass Finish, Nickel Finish or as specified
<b>Operating Temperature</b>	Standard seals -200 C to +800 C



## BRASS WIPING GLAND | FLANGE



Size:	X Y
Standard:	EN 50262 : 1999
Application	For use with SWA, Plastic and Rubber (Elastomer) Sealed cables. Used in dry indoor conditions.
Material	Brass BS2874
Finish	Brass Finish, Nickel Finish or as specified.



Size	5 NUMBER TO 004 NUMBER
Standard	IS 319
Ingress Protection	IP 60 as per IS 12063
Ingress Protection	Brass(IS-319) Standard - (Al./S./M.S.) also available
Entry Threads	ET/BS Conduit
Finish	Brass Finish or as specified
Accessories	Earth tag, Blank plugs, Adaptor/reducer etc. are available





## BRASS DOUBLE COMPRESSOR | SINGLE COMPRESSOR



<b>Size</b>	16 mm to 90 mm
<b>Function:</b>	Grips the inner and outer sheath of cable.
<b>Ingress Protection</b>	IP 60 as per IS 12063
<b>Material:</b>	Brass (IS-319) Standard - (Al / S.S. / M.S. also available)
<b>Entry Threads</b>	PG, Metric, NPT, BSP
<b>Finish</b>	Brass Finish, Nickel Finish or as specified.



<b>Size</b>	16 mm to 90 mm
<b>Standard</b>	IS 12943 : 1990
<b>Application</b>	Indoor or outdoor Cable Glands suitable for armoured / un-armoured cables
<b>Function</b>	Grips the outdoor sheath of cable.
<b>Ingress Protection</b>	IP 60 as per IS 12063
<b>Material</b>	Brass (IS-319) Standard - (Al / S.S. / M.S. also available)
<b>Entry Threads</b>	Metric Threads with 1.5 pitch as per IS 4218 Standard
<b>Finish</b>	Brass Finish, Nickel Finish or as specified.



®

## BRASS MALE BUSH | FEMALE BUSH



<b>Size</b>	20 mm to 50 mm (S&L)
<b>Imperial Size</b>	3/4" to 2" (S&L)
<b>Standard</b>	BS 6121
<b>Material</b>	Brass
<b>Application</b>	Use as Conduit pipe Fittings
<b>Threads</b>	Metric/PG/ Imperial Thread Fittings
<b>Finish</b>	Brass Male bushes and slotted brass plugs conduit fittings available in natural finish



<b>Size</b>	20 mm to 50 mm (S&L)
<b>Imperial Size</b>	3/4" to 2" (S&L)
<b>Standard</b>	BS 6121
<b>Material</b>	Brass
<b>Application</b>	Use as Conduit pipe Fittings
<b>Threads</b>	Metric/PG/ Imperial Thread Fittings
<b>Finish</b>	Brass Female bushes and slotted brass plugs conduit fittings available in natural finish



## BRASS ADAPTOR | REDUCER



<b>Size</b>	20 mm to 50 mm
<b>Imperial Size</b>	3/4" to 2"
<b>Standard</b>	BS 6121
<b>Material</b>	Brass
<b>Finish</b>	Brass Adaptor can be plated with Nickel



<b>Size</b>	25 mm*20 mm to 75 mm*63 mm
<b>Application</b>	Reducer allows a PG threaded gland to be terminated in enclosures with different entry thread form (ET, NPT, BSP)
<b>Standard</b>	BS 6121
<b>Material</b>	Brass
<b>Finish</b>	Electro Nickel plated
<b>Plating</b>	Chrome, Zinc, Tin



## BRASS NEUTRAL LINK I DIN RAIL



<b>Size</b>	7 WAY, 10 WAY, 13 WAY, 1/2 METER & 1 METER
<b>Material</b>	Brass, Copper and other as per requirements
<b>Finish</b>	Natural, Nickel plated or as per Specification

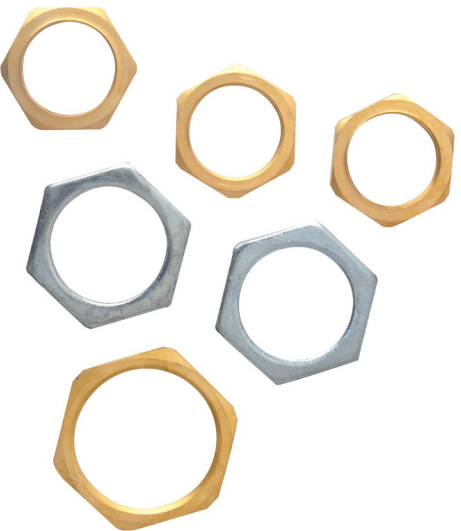


<b>Size</b>	35*7.5 MM
<b>Material:</b>	Free Cutting Brass IS 319 Type Free Cutting Brass as per BS 249 Type High Grade Free Cutting Brass Copper - Bs 2872
<b>Application:</b>	Use in test and disconnect blocks, plug-in, grounding blocks surface mount application use in different connecting device
<b>Finish</b>	Natural, Nickel Plated, Tin Plated, or any coating as per requirements

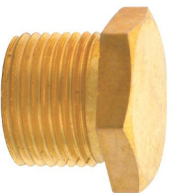




**BRASS LOCKNUT | STOPPING PLUG**



<b>Size</b>	20 MM to 70 MM
<b>Material</b>	Brass BS2874
<b>Finish</b>	Nickel, Zinc, Chrome as per requirements



<b>Size</b>	20 MM to 75 MM
<b>Material</b>	Brass BS2874
<b>Application:</b>	Stopping Plugs are used for sealing unused holes in enclosure
<b>Finish</b>	Nickel, Zinc, Chrome or as per customer requirement



## PVC SHROUD | BRASS EARTH TAG



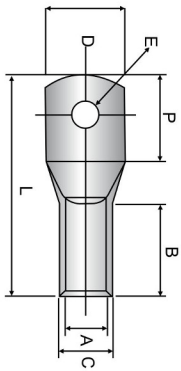
<b>Size</b>	20 MM to 90 MM
<b>Material</b>	PVC(High Grade polyvinchloride)
<b>Application</b>	Covering Cable Glands as additional protection against weather conditions and corrosion



<b>Size</b>	20 MM to 90 MM
<b>Material</b>	Brass, Aluminium, Copper
<b>Application</b>	Earth tags are used between Cable Gland Entry and equipment to provide earth bound connections.
<b>Type</b>	We provide two types of earth tag. One is With Screw and Other is Without Screw

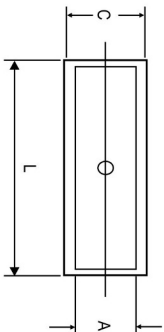


HEAVY DUTY INDUSTRIAL CABLE LUGS



<b>Size</b>	1.5mm. to 1000mm.
<b>Application</b>	Used for termination of copper conductors to equipments & switch gear panels.
<b>Material</b>	Cable Lugs manufactured from Electrolytic Copper
<b>Finish</b>	Lead Free Electro Tin Plated to prevent atmospheric corrosion

MEDIUM DUTY INDUSTRIAL CABLE LUGS



<b>Size</b>	10mm. to 630mm.
<b>Application</b>	Used for termination & extension of copper conductors.
<b>Material</b>	Cable Ferrule manufactured from Electrolytic Copper
<b>Finish</b>	Lead Free Electro Tin Plated to prevent atmospheric corrosion



## EARTHING ACCESSORIES

### PURE COPPER EARTH RODS

Pure Copper Earth Rods are made of pure (100%) electrolytic copper. The Earth Rods are hard drawn from extruded copper bars. Pure copper earth rods are preferred where soil conditions are very aggressive & corrosive. The rods are threaded internally to make it extensible for deep driving with the help of couplers.



ROD TO TAPE CLAMP ( TYPE A )

Size	Material	Part No.
26 x 12mm	Gunmetal	MBP 26/12
31 x 12mm	Gunmetal	MBP 31/12
40 x 10mm	Gunmetal	MBP 40/10
51 x 8mm	Gunmetal	MBP 51/08

ROD TO TAPE CLAMP ( TYPE G )

Size	Material	Part No.
1/2"	Gunmetal	EX-G-12
5/8"	Gunmetal	EX-G-58
3/4"	Gunmetal	EX-G-34
1"	Gunmetal	EX-G-1



U BOLT ROD CLAMP ( TYPE GUV )

Size	Material	Part No.
16-70Sqmm	Gunmetal	EX-GUV 1670
70-185Sqmm	Gunmetal	EX-GUV 70185
150-300Sqmm	Gunmetal	EX-GUV 150300





**EARTHING ACCESSORIES**

**D.C. TAPE CLIP**



Size	Material	Part No.
25 X 3mm	Gunmetal	EX-DC 253
25 x 6mm	Gunmetal	EX-DC 256
31 x 3mm	Gunmetal	EX-DC 313
31 x 6mm	Gunmetal	EX-DC 316
50 x 3mm	Gunmetal	EX-DC 503
50 x 6mm	Gunmetal	EX-DC 506

**HEAVY DUTY CABLE SADDLE**



Size	Material	Part No.
50Sq,mm	Gunmetal	EX-HCS 50
70Sq,mm	Gunmetal	EX-HCS 70
95Sq,mm	Gunmetal	EX-HCS 95

**SQUARE TAPE CLAMP**



Size	Material	Part No.
25 x 3mm	Gunmetal	EX-STC 253
25 x 6mm	Gunmetal	EX-STC 256
31 x 3mm	Gunmetal	EX-STC 313
50 x 3mm	Gunmetal	EX-STC 503
50 x 6mm	Gunmetal	EX-STC 506

**SQUARE CONDUCTOR SADDLE**



Size	Material	Part No.
50Sq,mm	XR-SCS-50	EX-SCS 50
70Sq,mm	XR-SCS-70	EX-SCS 70
95Sq,mm	XR-SCS-95	EX-SCS 95



## EARTHING ACCESSORIES



EARTHING CONDUCTOR

Size	Material	Part No.
25 x 3mm	Copper	EX-CT 253
25 x 6mm	Copper	EX-CT 256
31 x 3mm	Copper	EX-CT 313
50 x 3mm	Copper	EX-CT 503
50 x 6mm	Copper	EX-CT 506



TEST CLAMP

Size	Material	Part No.
50Sq.mm	XR-TC-50	EX-TC 50
70Sq.mm	XR-TC-70	EX-TC 70
95Sq.mm	XR-TC-95	EX-TC 95



**KIT PACKING**



CABLE GLAND		SIZE													
ARMoured GLAND PACK		CW 32													
CONDUIT ESTIMATION CHART FOR PVC, CW & E1 W/ GLAND KITS FOR LSP ARMoured CABLES TO BS 6724 1KV STRANDED COPPER CONDUCTORS															
L. S. F. CONDUCTOR SIZE MM <sup>2</sup>															
1.5	2.5	4	6	10	16	25	35	50	70	95	120	150	185	240	300
200	205	205	20	20	25	25	32	32	32	40	40	50	50	50	50
200	205	205	20	20	25	25	32	32	32	40	40	50	50	50	50
208	208	208	20	20	25	25	32	32	32	40	40	50	50	50	50
208	208	208	20	20	25	25	32	32	32	40	40	50	50	50	50
NOTE: IT IS RECOMMENDED TO USE LSP GLAND KITS WITH LSP CABLES															
FOR PVC & XPE ARMoured CABLES TO BS 6346 AND 5467 1 KV STRANDED COPPER CONDUCTORS															
PVC		XLPE													
CONDUCTOR SIZE MM <sup>2</sup>		CONDUCTOR SIZE MM <sup>2</sup>													
1.5	2.5	4	6	10	16	25	35	50	70	95	120	150	185	240	300
200	205	205	20	20	25	25	32	32	32	40	40	50	50	50	50
200	205	205	20	20	25	25	32	32	32	40	40	50	50	50	50
208	208	208	20	20	25	25	32	32	32	40	40	50	50	50	50
208	208	208	20	20	25	25	32	32	32	40	40	50	50	50	50

The Dimensions of cables vary with the manufacturing tolerances. We advise the cable diameter is measured where possible before purchasing components.



<b>Size</b>	20mm - 32mm
<b>Include:</b>	2-Brass Cable Gland
	2-Black PVC Shroud
	2-Brass Earth Tag
<b>Size</b>	40mm - 75mm
<b>Include:</b>	1-Brass Cable Gland
	1-Black PVC Shroud
	1-Brass Earth Tag



**MAHENDRA BRASS PRODUCTS**

- K-1-75/1, G.I.D.C, Shanker Tekri Udhvyog Nagar  
Jamnagar 361004, Gujarat (India)  
**0288-2561069 - Administration**
- C-2-112, G.I.D.C, Shanker Tekri Udhvyog Nagar  
Jamnagar 361004, Gujarat (India)  
**0288-2560728 - Factory**
- +91 94284 23718 SUMIT
- +91 94280 38544 DINESH
- info@mahendrabrassproducts.co.in
- www.mahendrabrassproducts.com

